

City Hall Copy

STORM DRAINAGE IMPROVEMENTS

TURKEY CREEK TRIBUTARY AT JOHNSON DRIVE

CITY PROJECT NO. 3285
 SMAC PROJECT NO. TC-021-051
 CITY OF SHAWNEE, KANSAS
 SECTION 11, TOWNSHIP 12, RANGE 24

RECEIVED
 FEB 29 2008
 CITY OF SHAWNEE
 02-29-08 03:02 IN

UTILITIES

Everest Connections
 Tom Reaves
 9701 Lackman Road
 Lenexa, Kansas 66219
 Office (913) 322-9631

Johnson County Unified Wastewater District
 Charles McAllister
 7311 W. 130th St., Ste 100
 Overland Park, Kansas 66213
 Office (913) 681-3200 Ext. 2108

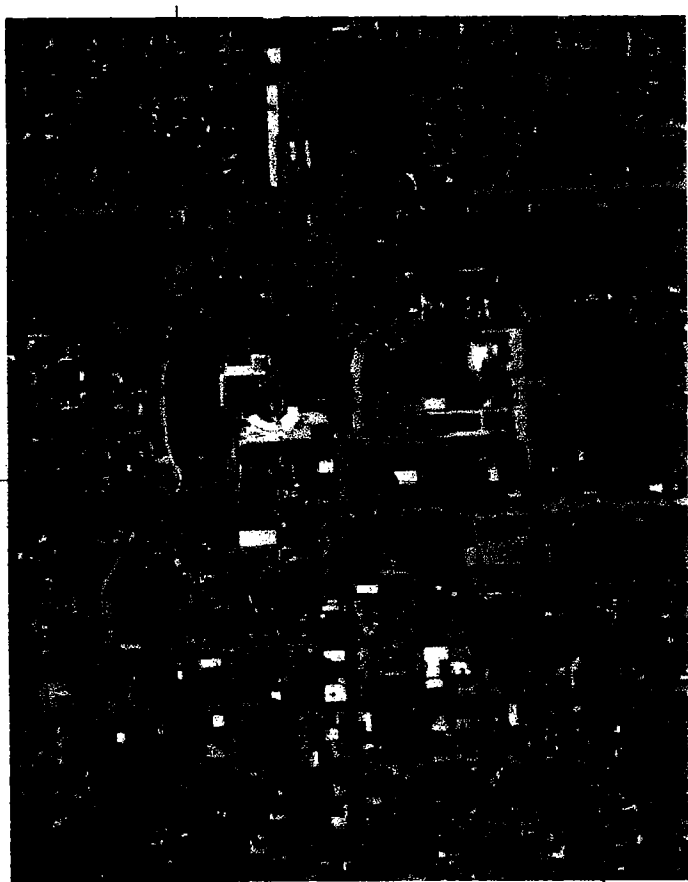
AT&T
 Randy Faircloth
 9444 Mail
 1st Floor
 Overland Park, Kansas 66207
 Office (913) 383-4884

Time Warner Cable
 Mario Escobar
 8221 W. 119th St.
 Overland Park, Kansas 66213
 Office (913) 643-1914

Kansas Gas Service
 Chuck MacAdams
 Manager of Engineering
 11401 W. 89th Street
 Overland Park, Kansas 66214
 Office (913) 599-8981

KOP&L
 Chris Seibert
 16215 W. 108th Street
 Lenexa, Kansas 66219
 (913) 894-3070

PROJECT LOCATION



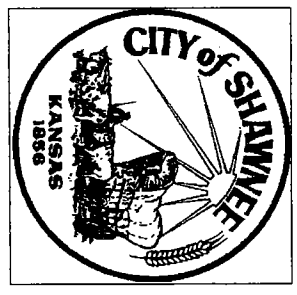
LOCATION MAP

Funding Approved - Project Conforms to
 Stormwater Management Program Requirements

Kent Lage
 Kent Lage, P.E.
 Jo. Co. Stormwater Management Program

2/27/08
 Date

BHC RHODES
 CIVIL ENGINEERS - SURVEYORS
 6363 College Blvd., Suite 500
 Overland Park, Kansas 66211
 phone (913) 663-1900
 fax (913) 663-1633



APPROVED BY:
 The City of Shawnee, Kansas

City Engineer
 Date *2/27/08*

PREPARED & SUBMITTED BY:
 BHC RHODES
 Overland Park, Kansas

Steven K. Bachenberg, P.E.
 Project Manager



APPROVED FOR ONE YEAR FROM THIS DATE



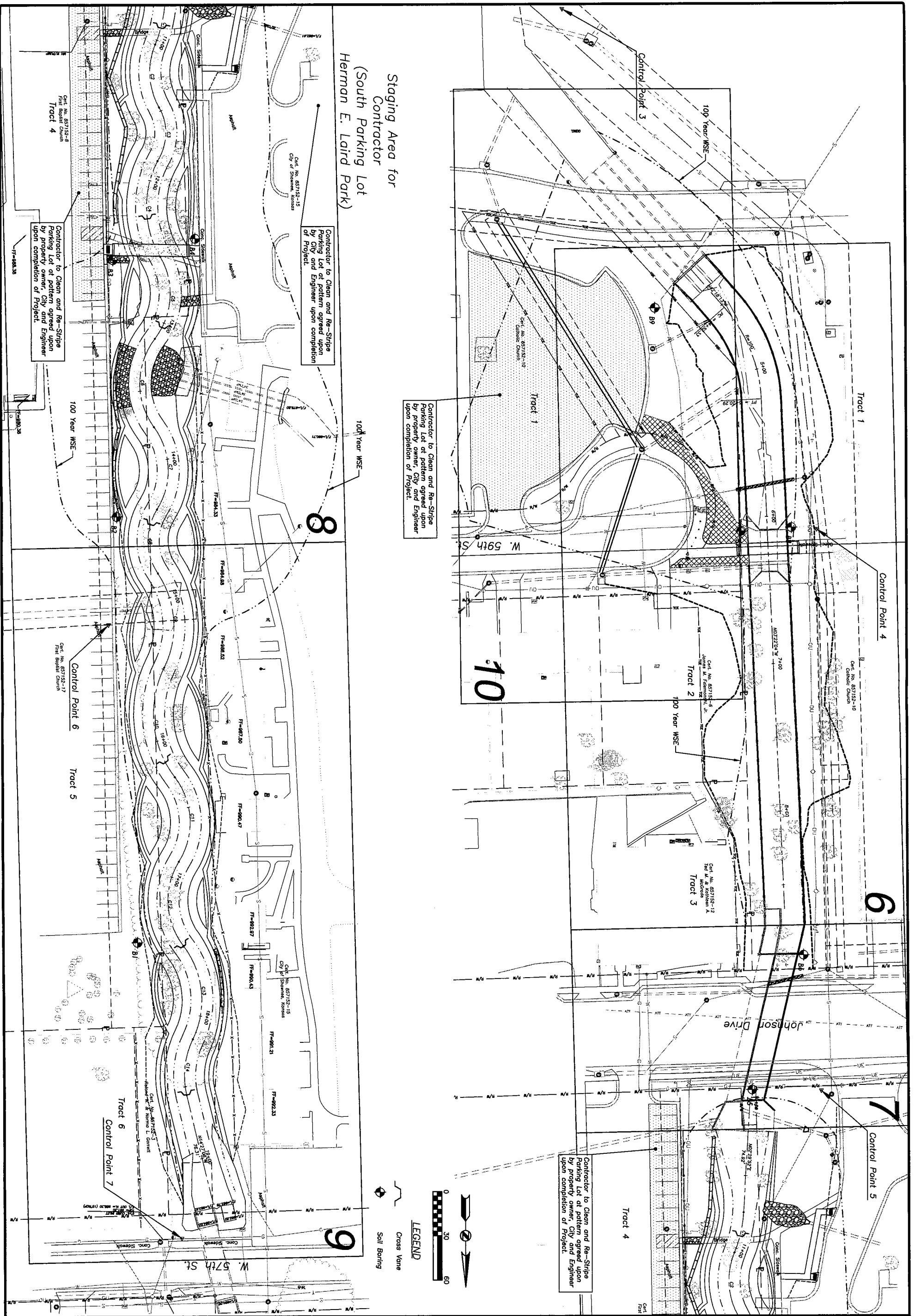
INDEX OF SHEETS

1	Cover
2	Site Plan/General Layout
3	Survey Control
4	ROW and Easement Layout
5	General Notes
6	Creek (Concrete) Plan & Profile
7	RCB Plan & Profile
8-9	Creek (Natural) Plan & Profile
10	Storm Sewer Plan & Profile
11	Concrete Channel, Typical Section
12-14	RCB Details
15-17	Traffic Control
18-19	Street Repair Details
20	Pavement Marking Details
21	Residential Entrance Detail
22	Curb Details
23	Sidewalk Details
24-25	Natural Creek Details, Typical Section
26	Rip-Rap Details
27	Pipe Bedding Details
28	End Section Details
29-30	Sanitary Sewer Details
31	Bridge Details
32-33	Fence Details
34-35	Signs-City Sign and SMAC Sign Details
36-37	Watershed Map
38	Hydraulic Calculations
39	Planting Plan
40	Erosion Control
41	Planting Details
42-44	Planing Details
45-55	Cross Sections

LEGEND

●	Set Monument (1/2" Iron reinforcing rod w/cap, NS CD 175) unless otherwise noted
○	Found Monument
□	Found Monument in Box
▲	Found Right-of-Way Marker
△	Control Point
▽	Benchmark
—	Overhead Utility Lines
- - -	Underground Electric Line
—	Utility Pole
—	Guy Anchor
—	Utility Pole w/Light
—	Light Pole
—	Electric Pedestal
—	Electric Meter
—	Electric Access Vault
—	Electric Manhole (Mounted)
—	Electric Manhole
—	Yard Light
—	Air Conditioner Unit
—	Water Line
—	Water Valve
—	Fire Hydrant
—	Water Meter
—	Water Manhole
—	Water Vault
—	Sprinkler Control Box
—	Sprinkler Valve
—	Gas Line
—	Gas Valve
—	Regulator Unit
—	Gas Meter
—	Underground Telephone Line
—	Telephone Pedestal
—	Telephone Access Vault
—	Underground Fiber Optic Line
—	Fiber Optic Manhole
—	Fiber Optic Access Vault
—	Relocate
—	(Rel.)
—	Traffic Signal Light
—	Traffic Control Manhole
—	Traffic Control Box
—	Traffic Control Vault
—	Underground Cable TV Line
—	Cable TV Pedestal
—	Sanitary Sewer Line
—	Sanitary Sewer Manhole
—	Clean-out
—	Verified Clay Pipe
—	Ductile Iron Pipe
—	Polyvinyl Chloride Pipe
—	Storm Sewer Line
—	Storm Sewer Manhole
—	Down Spout
—	Corrugated Metal Pipe
—	Corrugated Metal Arch Pipe
—	Reinforced Plastic Pipe
—	Reinforced Concrete Arch Pipe
—	Reinforced Concrete Box
—	Yard Drain
—	Wood Fence
—	Chain Link Fence
—	Wire Fence
—	Plastic Fence
—	Wrought Iron Fence
—	Gate Post
—	Single Pole Sign
—	Underground Utility Line Marker
—	Metal Guard Rail or Hand Rail
—	Flag Pole
—	Satellite Dish
—	Concrete Bollard
—	Wood Bollard or Wood Post
—	Handicap Parking Stall
—	Bush
—	Deciduous Tree and Size
—	Coniferous Tree and Size
—	Tree to be removed

Install Stormwater Management Program Project Sign and City Project Sign On North Side of Johnson Drive West of the existing RCB.



Staging Area for Contractor
(South Parking Lot)
Herman E. Laird Park)

Contractor to Clean and Re-Stripe Parking Lot at pattern agreed upon by City and Engineer upon completion of Project.

Contractor to Clean and Re-Stripe Parking Lot at pattern agreed upon by property owner, City and Engineer upon completion of Project.

Contractor to Clean and Re-Stripe Parking Lot at pattern agreed upon by property owner, City and Engineer upon completion of Project.

LEGEND

- Cross Vane
- Soil Boring

**STORM DRAINAGE IMPROVEMENTS
TURKEY CREEK TRIBUTARY
AT JOHNSON DRIVE**

SITE PLAN

Prepared For:
**CITY OF SHAWNEE
PUBLIC WORKS DEPT.
11110 Johnson Drive
SHAWNEE, KS 66203-2799
913.631.2500**

BHC RHODES
CIVIL ENGINEERS - SURVEYORS
6363 College Blvd., Suite 500
Overland Park, Kansas 66211
phone (913) 663-1900
fax (913) 663-1633

Rev.	Date	Description	Design	Drawn	Check

